



# Eddie Bauer® Ladies WeatherEdge® Jacket. EB559



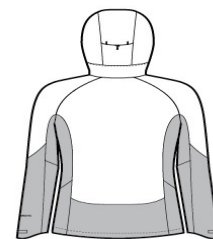
Two element-fighting WeatherEdge 5K/5K fabrics come together in this jacket for highly waterproof, breathable performance. Fully seam-sealed, this jacket also features the exclusive StormRepel® durable water-repellent (DWR) coating for additional weather protection. Four-way stretch for easy mobility. Adjustable hood with locking drawcord, waterproof Vislon® front zippered pockets, adjustable tab cuffs with hook and loop closures, embroidery access pocket. Adjustable locking drawcord hem. Contrast WeatherEdge logo heat transfer on left sleeve. Contrast Eddie Bauer logo heat transfer on right hem. Made of 94/6 poly/spandex and 92/8 poly/spandex.

### CARE INSTRUCTIONS

Machine wash cold with like colors, only non-chlorine bleach when needed, tumble dry low, warm iron if necessary.

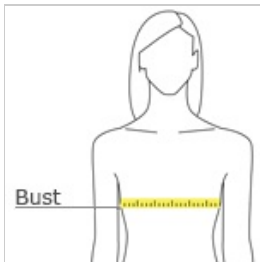


front



back

### HOW TO MEASURE



#### BUST

With arms down at sides, measure around the upper body, under arms and around the fullest part of the bust.

### SIZE CHART

	XS	S	M	L	XL	2XL	3XL	4XL
Size	2	4/6	8/10	12/14	16/18	20/22	24/26	28/30
Bust	32-33	34-35	36-37	38-40	41-43	44-46	47-49	50-52

### COLOR INFORMATION



Black  
PMS NTR BLACK  
C



Cobalt Blue/  
River Blue  
PMS 654C



Metal Grey/  
Grey Steel  
PMS COOL GREY  
10C